

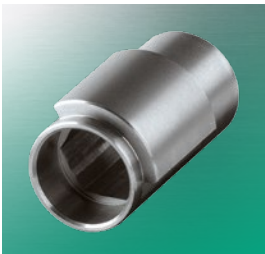


# Precision Machining- and Cold Heading Parts



Since 1948 Robert Schröder produces precision machined parts for the automotive industry and other industrial branches. Robert Schröder is known for quality, on time delivery and convincing service.

The extended range of cam- and cnc-g geared single- and multi-spindle automatic lathes as well as a wide range of 2nd operations offer the greatest variety for the production of parts. Also the manufacturing of coldforged parts for large volumes is included in our production range.



We support our customers, beginning with the product development, the initial sample phase up to the finished part including all steps of 2nd operations. Using bar stock or cold heading blanks.



## Single-spindle automatic lathes and machining centers

- cam- and cnc-g geared up to  $\varnothing$  65 mm

## Multi-spindle automatic lathes

- cam- and cnc-g geared up to  $\varnothing$  52 mm

## Centerless grinders

- for infeed and thrufeed process

## Thread and Profile rolling machines

## Spline rolling equipment

## Cold forging

- Double stroke up to 6 die 6 blow,  
up to 25 mm wire  $\varnothing$

## Capacities

- Centerless ground and hard turned parts with high requirements on dimensional tolerances, surface roughness and form-and-position tolerances
- Cold rolled worms, splines and precision trapezoidal threads
- Broaching of inner shapes and splines
- Machined splines
- Sub - assemblies
- 100% Camera Inspection for zero – defect quality
- Measuring equipment: Shaft – Measuring Machines, CMM, Gear Measuring Center, Surface Quality, Contour Measuring, Roundness Measuring Machines
- High End cleaning technology for high requirements on cleanliness



According to: Robert Schröder ISO/TS 16949:2009, Hein VDA 6.1  
SPC with CAQ-System